

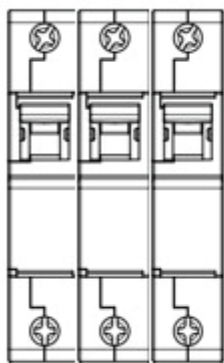
Hydraulic-Magnetic Circuit Breakers

AC & DC products for both distribution and battery protection
Standard range for quick supply

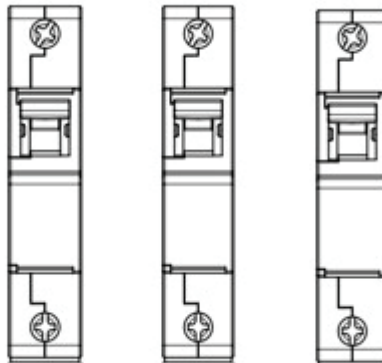


Thermal-Magnetic vs Hydraulic-Magnetic

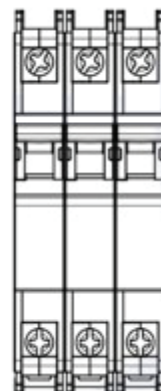
Thermal
with no spacing



Thermal
with spacing



Hydraulic-Magnetic
with no spacing

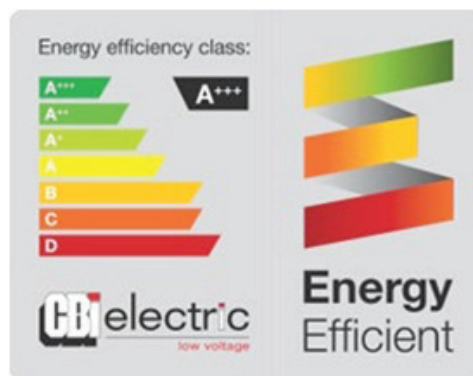


Nominal current	16A	16A	16A
Operating at 30° C	10.8A	11.9A	16A
Operating at 45° C	9.6A	10.6A	16A

Due to the Hydraulic-Magnetic technology the MCB will keep rated current regardless of the ambient temperature. No de-rating needed.

Advantages:

- Not sensitive to ambient temperatures
- Always keep rated current regardless of temperature, classified from -40° to 85° C
- Dedicated AC and DC products with correct approvals
- Immediate re-set after tripping –no cooling down period
- World wide approval profile
- Possibility to customize products
- Energy efficient alternative –45% lower internal resistance





B-Frame Standard DC Range

The CBI B-frame circuit breaker range is the most compact and robust hydraulic-magnetic circuit breaker with current rating up to 30A. It's a perfect solution as a distribution circuit breaker where the space is limited, and you would like to easily switch of a load. It has all international approvals.

Emcomp have chosen to create a standard range which is always kept on stock for best cost and availability. Other options exist as well, contact us for further information. The standard range is built for DC voltages up to 80 VDC with rated current from 2A up to 30A. The handle is the popular "protected rocker" with side protection to avoid accidental switching of the breaker. The characteristics is a medium time delay. Mounting is done just by "click in" the circuit breaker in a defined hole size.

Applications

- MCB Distributions
- Lighting equipment
- Office equipment
- Power supplies
- Telecom power distribution
- Small generators and motors
- Railway signalling systems
- Entertainment systems
- Vending machines
- Power distribution units (PDU)
- Suitable for motor starting
- Solar and renewable power

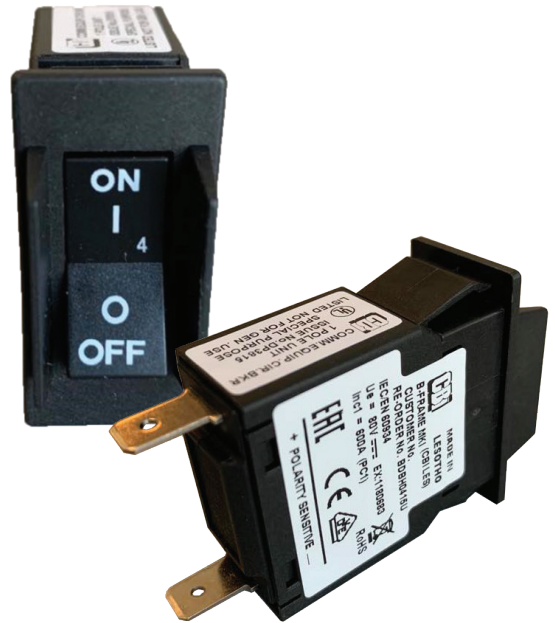
Features

- DC circuit breaker
- Hydraulic-Magnetic Technology
- 100% Rating Capability Independent of Ambient Temperature
- VDE, EAC and CCC approved
- UL Listed (UL 489A)
- IEC/EN 60934
- Ratings up to 30A
- Precision Tripping
- Ultra Compact
- Reset Immediately After Overload
- Switch and circuit breaker in one shell

Technical data

DATA	
TOLERANCE	± 0.4 mm UNLESS STATED
CASING MATERIAL	POLYAMIDE (V-0 @ 0.8 mm)
CONFIGURATION	HYDRAULIC MAGNETIC CIRCUIT BREAKER
MAXIMUM OPERATING VOLTAGE	80V DC
INTERRUPTING CAPACITY	0.6kA @ 80V DC
OPERATING TEMPERATURE	-40° C TO +85° C
APPROVALS	UL489A VDE (IEC/EN 60934)
HANDLE	BLACK (I/O & ON/OFF & AMP RATING)

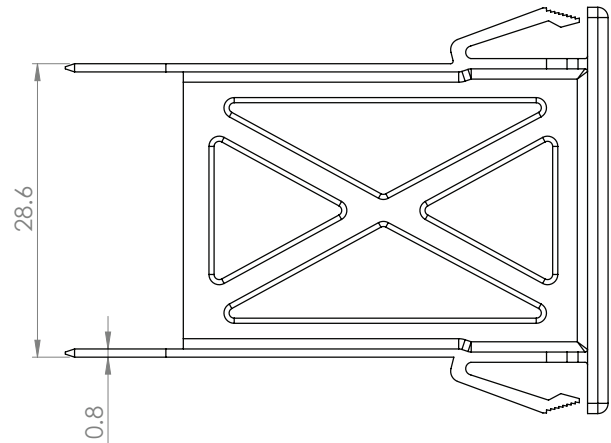
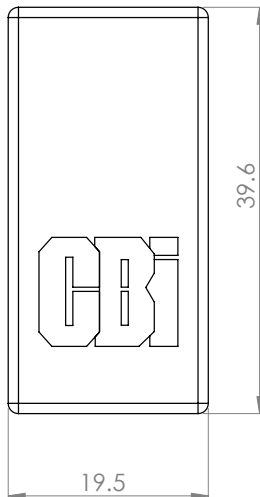
PRODUCT	
Item No	Rated Current
BDBH0410U	2A
BDBH0424U	4A
BDBH0411U	6A
BDBH0412U	10A
BDBH0413U	16A
BDBH0414U	20A
BDBH0415U	25A
BDBH0416U	30A



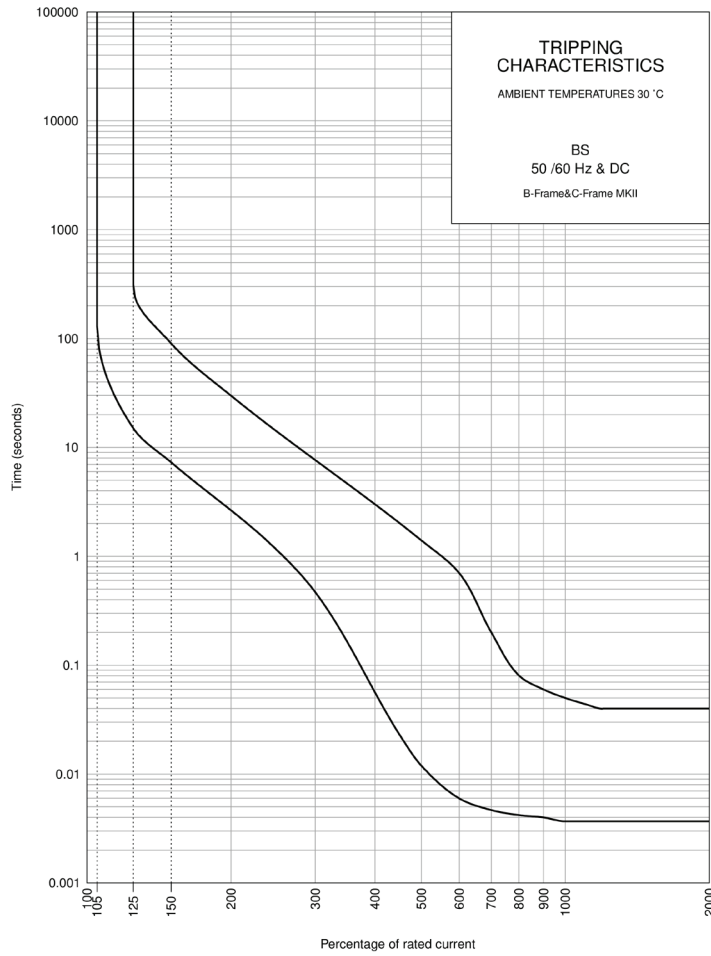
Accessories

Cover for empty positions in your distribution. Works for both snap in in a front plate as well as mounted in female terminal contacts. Esthetical as well as safe solution.

Escutcheon blanks for empty slots, Item Number EC204704-2

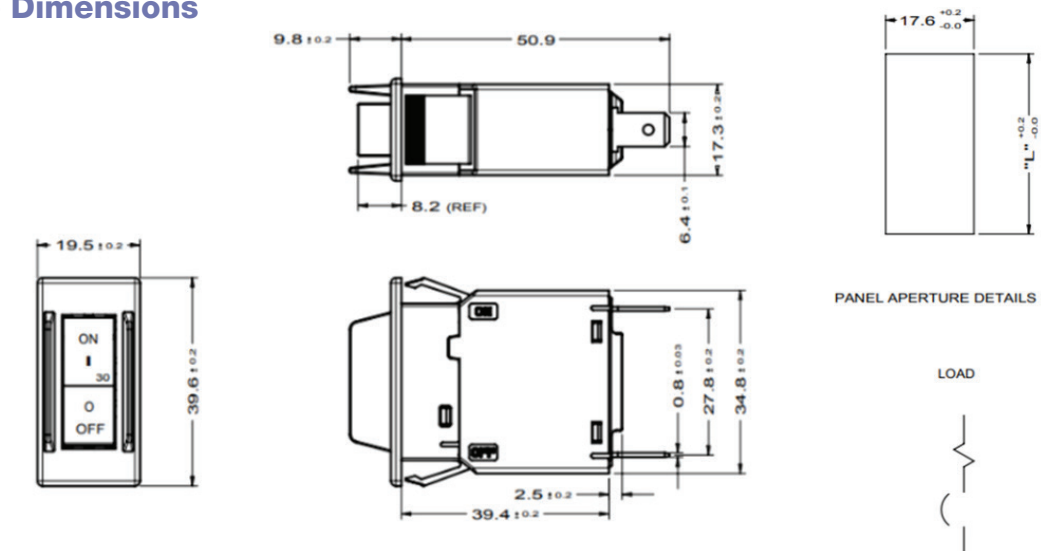


Medium Time Delay Curve- BS Curve



PERCENTAGE OF RATED CURRENT	100%	125%	135%	150%	200%	300%	400%	500%	600%	700%	800%	900%	1000%	1200%
MINIMUM TRIP TIME IN SECONDS	NO TRIP	15	10.5	7.3	2.6	0.47	0.06	0.012	0.006	0.0047	0.0042	0.004	0.0037	0.0036
MAXIMUM TRIP TIME IN SECONDS	NO TRIP	300	147	90	30	8	3.2	1.4	0.7	0.2	0.08	0.05	0.045	0.04

Outline Dimensions



PANEL THICKNESS	1.0-1.6mm	1.7-2.6mm	2.7-3.2mm
"L" SIZE	35.2	36.0	36.4





CBI DD-Frame High Amp Standard Range



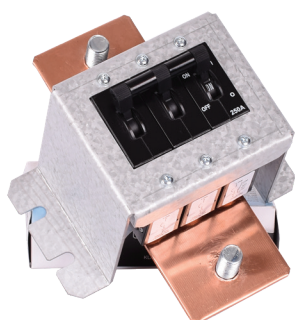
Very compact and reliable DC hydraulic magnetic circuit breaker ideal for battery applications, power supplies and distribution for larger loads in DC branch protection. The CBI DD-frame High Amp Standard range is a modular circuit breaker with rated current 40A-400A with a certified 10kA breaking capacity and a tested breaking capacity up to 25kA.

All CBI DD-frame High Amp Standard Range breakers have gold plated auxiliary switches for easy electric reading of switching status and maximum reliability of your system over time.

The DD-Frame circuit breakers are IEC, UL and CCC-approved.

Paralleled solutions

The DD-frame High Amp standard range are certified for used in paralleled-busbar systems. We have a wide range of standard solutions available and can as well design your specific current distribution busbar and mounting bracket.

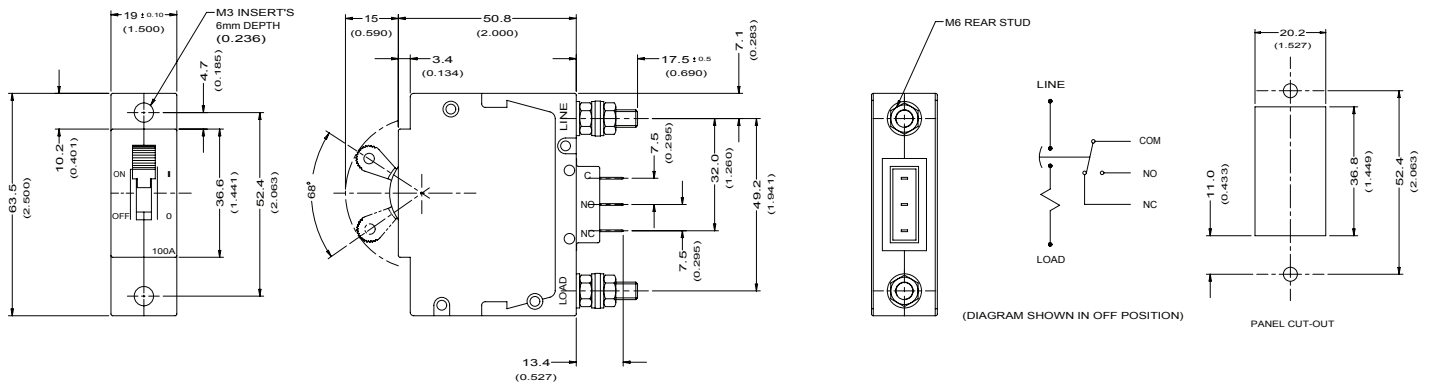


Battery breaker 1 module width 40-100A

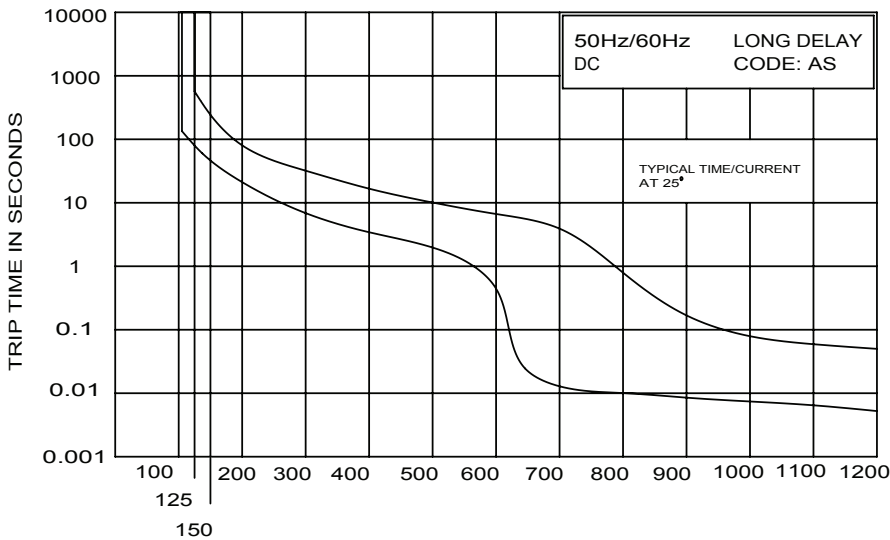


Item No	Voltage Range	Rated Current
DDABM0326	12-80VDC	40A
DDABM0181	12-80VDC	60A
DDABM0307	12-80VDC	80A
DDABM0198	12-80VDC	100A

Dimensions



Long Time delay, AS



Percentage of rated current

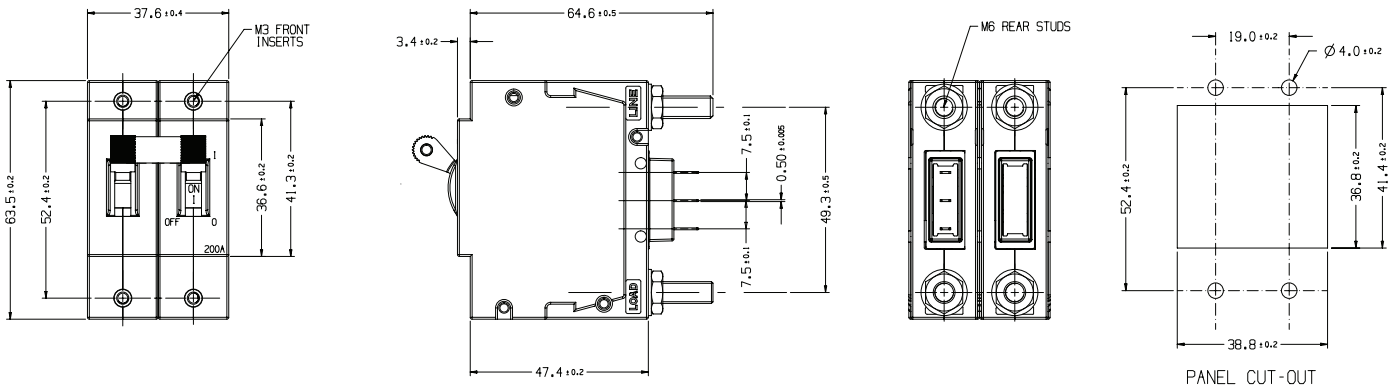
PERCENTAGE OF RATED CURRENT	100 %	125 %	200 %	400 %	600 %	800 %	1000 %	1200 %
MINIMUM TRIP TIME IN SECONDS	NO TRIP	80	21	3.5	0.45	0.01	0.0075	0.005
MAXIMUM TRIP TIME IN SECONDS	NO TRIP	560	80	17	6.8	0.8	0.08	0.05

Battery breaker 2 module width 125-200A

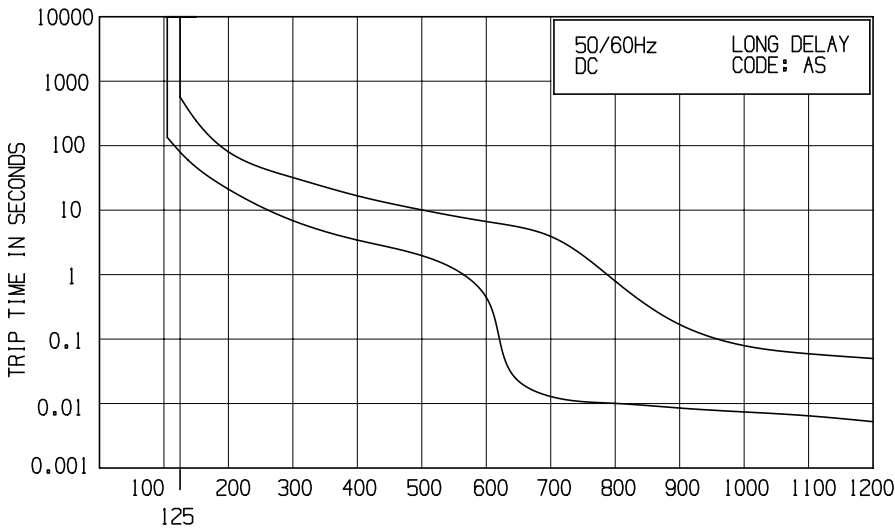
Item No	Voltage Range	Rated Current
D2ABXA0510	12-80VDC	125A
D2ABXA0085	12-80VDC	150A
DDABM0178	12-80VDC	200A



Dimensions



Long Time delay, AS



Percentage of rated current

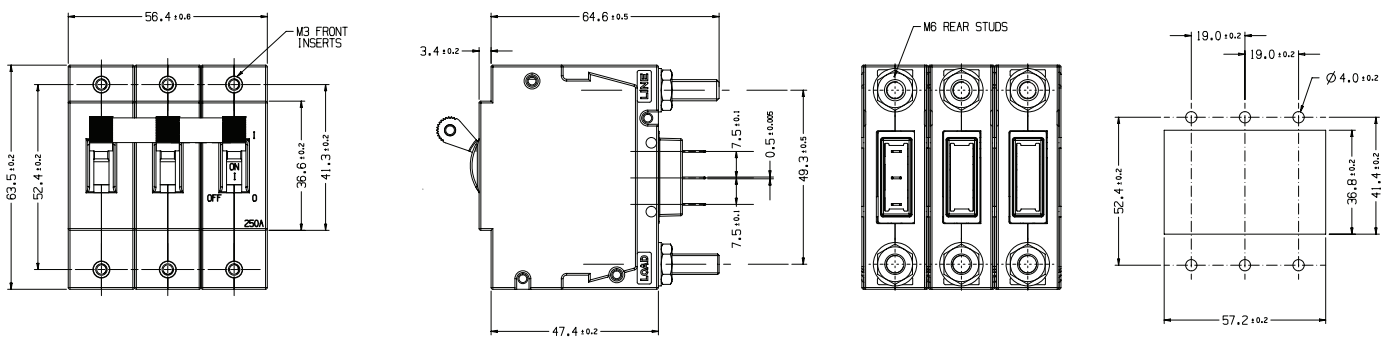
PERCENTAGE OF RATED CURRENT	100%	125%	200%	400%	600%	800%	1000%	1200%
MINIMUM TRIP TIME IN SECONDS	NO TRIP	80	21	3.5	0.45	0.01	0.0075	0.005
MAXIMUM TRIP TIME IN SECONDS	NO TRIP	560	80	17	6.8	0.8	0.08	0.05

Battery breaker 3 module width 250A

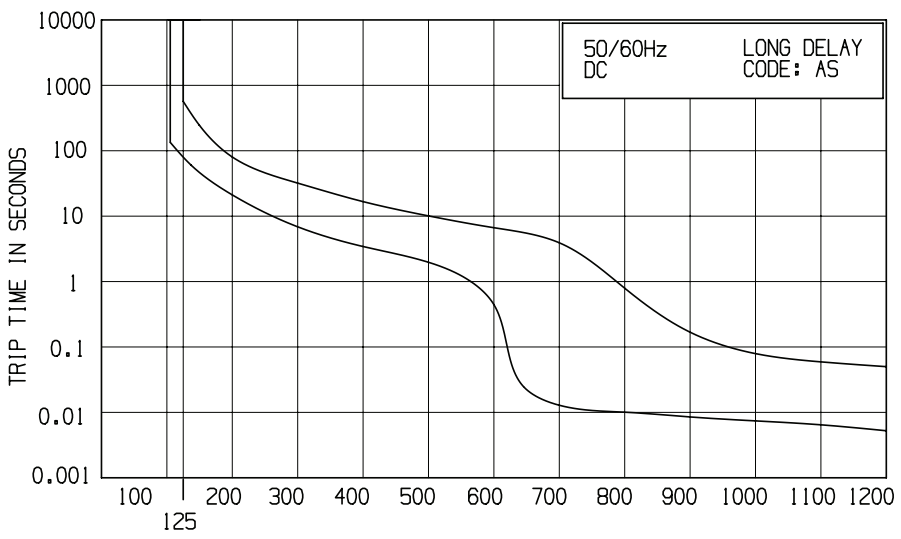


Item No	Voltage Range	Rated Current
DDABM0286	12-80VDC	250A

Dimensions



Long Time delay, AS



Percentage of rated current

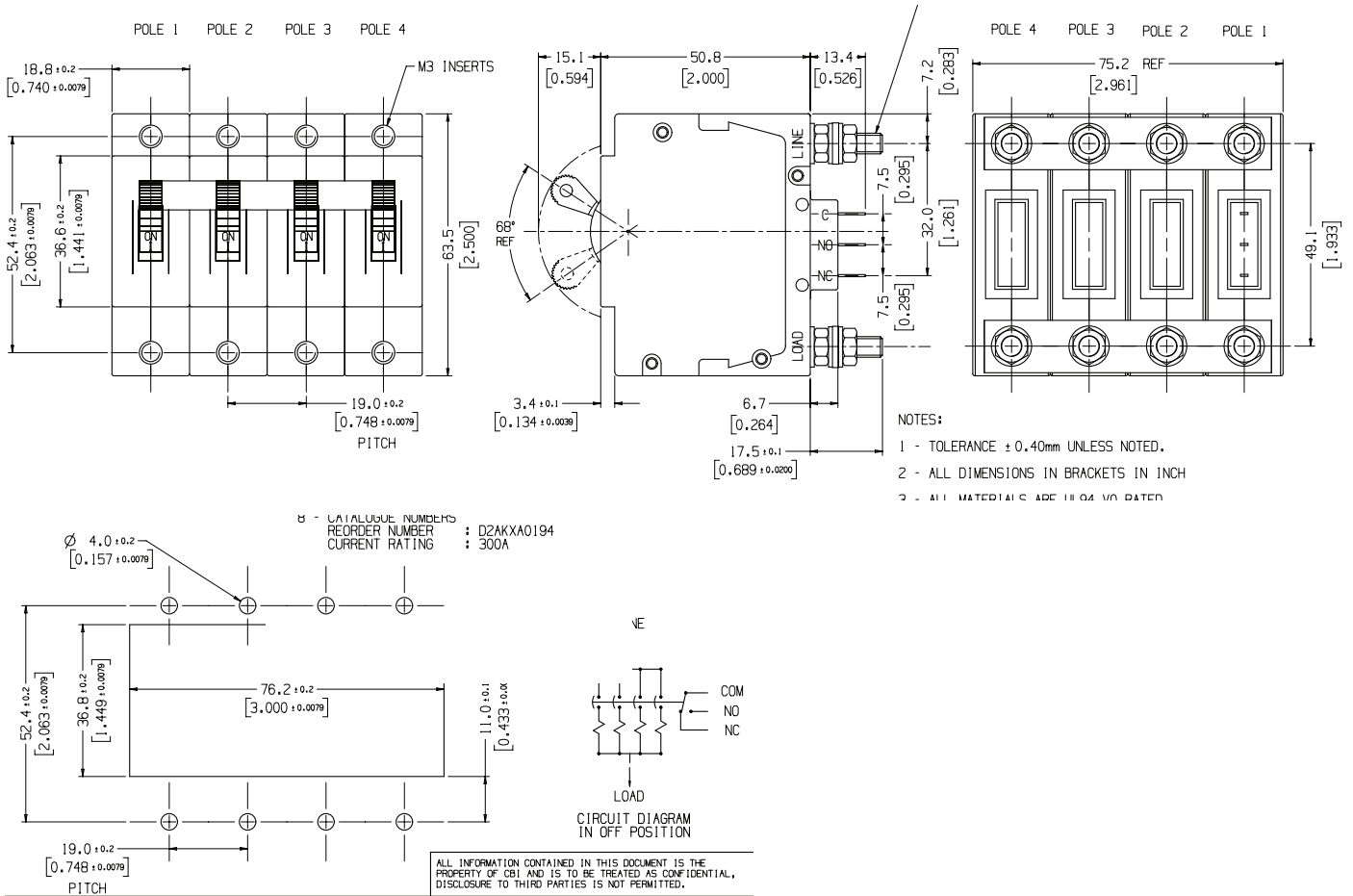
PERCENTAGE OF RATED CURRENT	100%	125%	200%	400%	600%	800%	1000%	1200%
MINIMUM TRIP TIME IN SECONDS	NO TRIP	80	21	3.5	0.45	0.01	0.0075	0.005
MAXIMUM TRIP TIME IN SECONDS	NO TRIP	560	80	17	6.8	0.8	0.08	0.05

Battery breaker 4 module width 300A

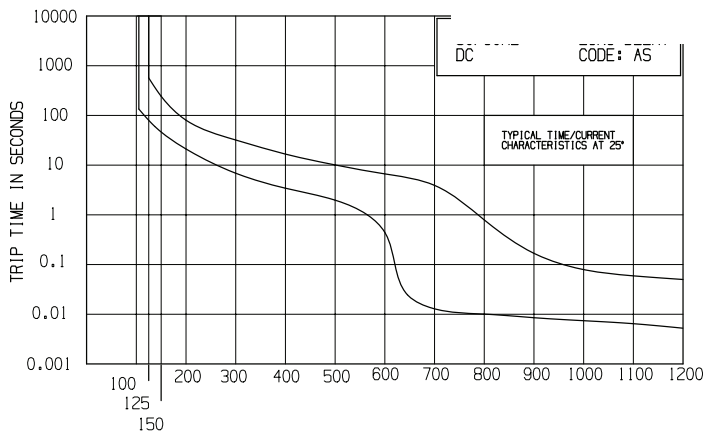


Item No	Voltage Range	Rated Current
D2AKXA0194	12-80VDC	300A

Dimensions



Long Time delay, AS



Percentage of rated current

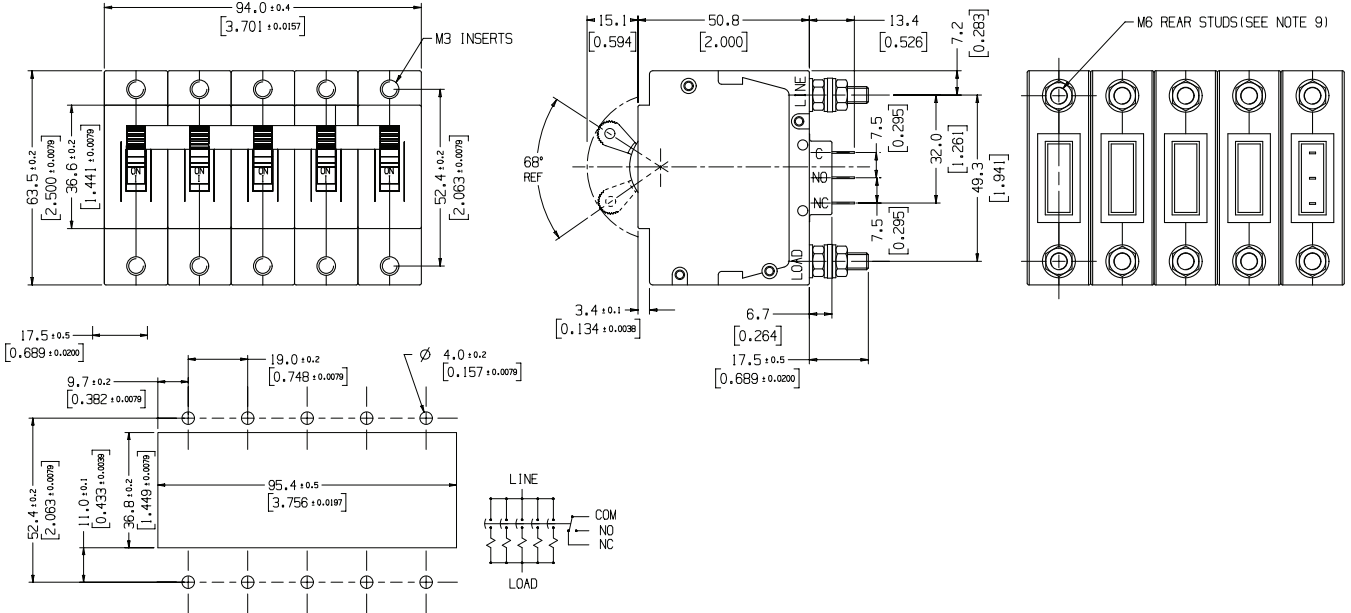
PERCENTAGE OF RATED CURRENT	100 %	125 %	200 %	400 %	600 %	800 %	1000 %	1200 %
MINIMUM TRIP TIME IN SECONDS	NO TRIP	80	21	3,5	0,45	0,010	0,0075	0,005
MAXIMUM TRIP TIME IN SECONDS	NO TRIP	560	80	17	6,8	0,8	0,08	0,05

Battery breaker 5 module width 400A

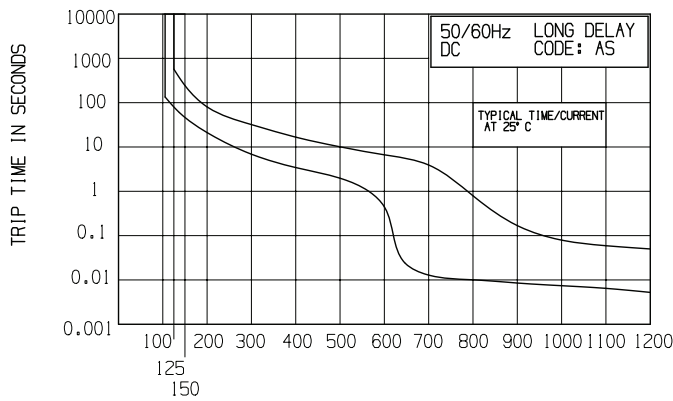
Item No	Voltage Range	Rated Current
D2AKXA0195	12-80VDC	400A



Dimensions



Long Time delay, AS



Percentage of rated current

PERCENTAGE OF RATED CURRENT	100 %	125 %	200 %	400 %	600 %	800 %	1000 %	1200 %
MINIMUM TRIP TIME IN SECONDS	NO TRIP	80	21	3.5	0.45	0.010	0.0075	0.005
MAXIMUM TRIP TIME IN SECONDS	NO TRIP	560	80	17	6.8	0.8	0.08	0.05





QY49U2200

QYD28U2100B0Z

QY18U263B0

QYD18U206B0

QY-Series Standard DC Range

Very compact hydraulic magnetic circuit breaker for space-saving distributions and various forms of device protection.

The CBI series QY frame consists of modular DC breakers in a rated current range of 0.5-200A with a 10kA breaking capacity.

The QY frame circuit breakers are IEC, UL and CCC approved.

Features

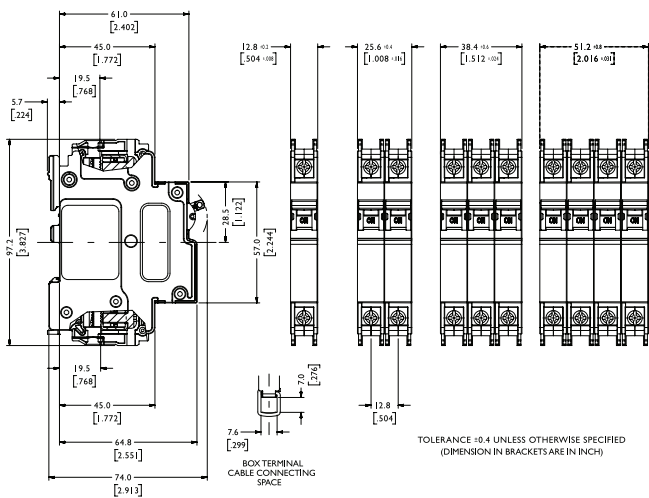
- DC Circuit Breaker
- Hydraulic-Magnetic Technology
- 100% Rating Capability Independent of Ambient Temperature
- Up to Two Poles (Four Poles Parallel)
- VDE, CE and CCC approved
- UL Listed (UL 489A)
- Ratings up to 200A
- Optional Auxiliary / Trip Alarm Switch
- Wide Range of Time Delays and Operating Currents
- Precision Tripping
- Ultra Compact – 13mm Width Module
- Trip Indication with Mid-Trip Handle
- Reset Immediately After Overload

Applications

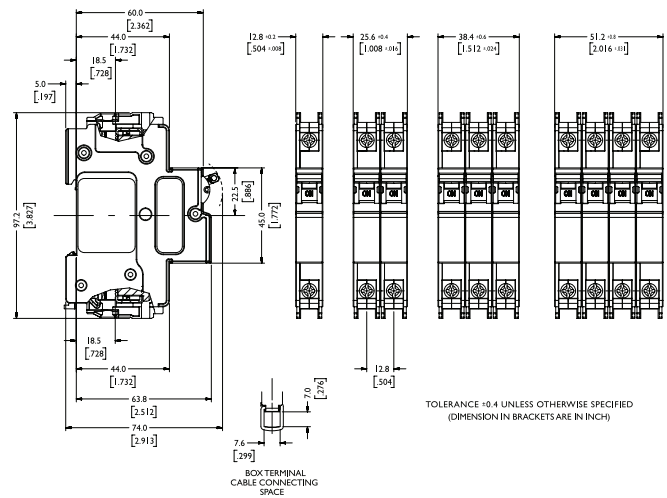
- DC branch circuit protection
- Telecommunication equipment
- UPS equipment
- Alternative energy equipment
- Battery protection & switching
- Telecommunication DC power distribution

TECHNICAL DATA	
Product Type	Circuit Breaker
Approvals	UL 489A, IEC / EN 60947-2, VDE, CE, CCC
Number of Poles	1, 2 2, 3, 4p parallel
Operating Voltages	80VDC
Minimum Current Rating	0.1A
Maximum Current Rating	200A
Interrupting Capacity	10kA
Mounting Options	-40° C - +85° C
Tripping Curves	Medium time delay U2

Outline Dimensions: Dual Mount



Outline Dimensions: DIN Mount



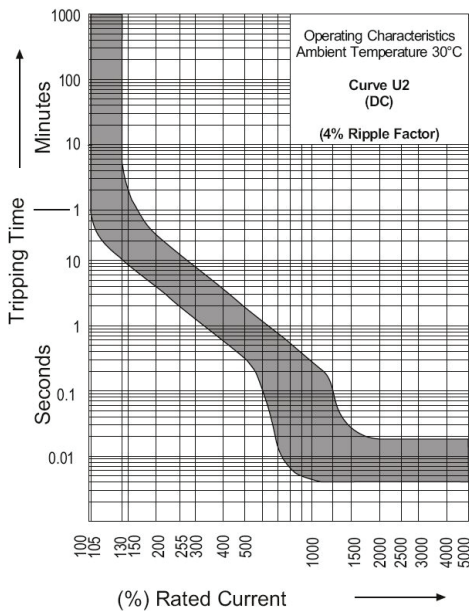
Optional Features - contact Emcomp

- Auxiliary Switch
- Auxiliary Switch + Trip Alarm
- Trip Alarm
- Handle Lock
- Surface Mounting Clips
- Busbar
- 57mm Escutcheon Blank
- Higher DC voltages: 125 VDC, 250 VDC and 600 VDC
- Specialized characteristics: Ultra short to Long time delay

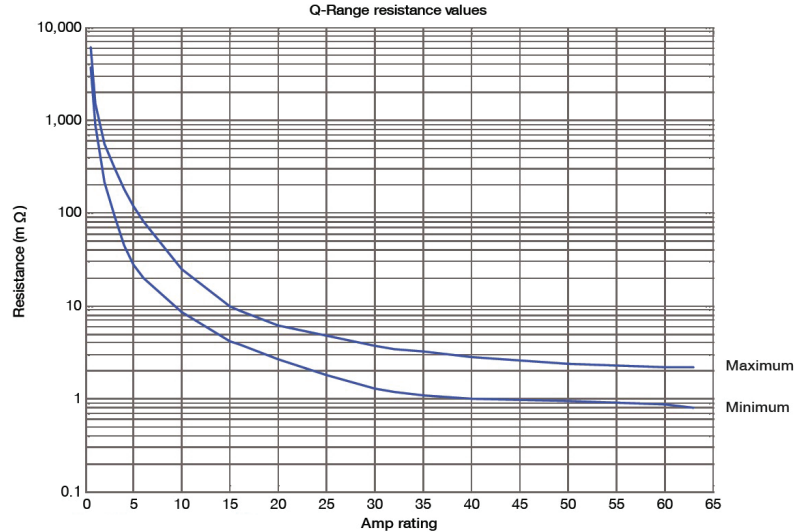
Auxillary Switch, Trip Alarm & Combo: Features - contact Emcomp

- AC and DC Voltages
- UL 489 Listed (Auxiliary switch: 6A 250V AC, 0.5A 80V DC; Trip alarm: 5A 250V AC, 0.5A 125V DC)
- EC 60947-5-1 Approved (Auxiliary switch: 6A 250V AC, 0.5A 80V DC; Trip alarm: 5A 250V AC, 0.5A 125V DC)
- Factory Fitted
- Attached to Right Hand Side of Circuit Breaker
- Compact 6.5mm Width
- Available in Dual and DIN Rail Mounting

Medium Time Delay Curve-U2



Internal Impedance vs Current Rating





DIN Range, grey, 45 mm front escutcheon, 1 module

Item No	Rated Current
QYD18U201B0	1A
QYD18U202B0	2A
QYD18U203B0	3A
QYD18U204B0	4A
QYD18U206B0	6A
QYD18U210B0	10A
QYD18U216B0	16A
QYD18U220B0	20A
QYD18U225B0	25A
QYD18U232B0	32A
QYD18U240B0	40A
QYD18U250B0	50A
QYD18U260B0	60A
QYD18U263B0	63A



DIN Range, grey, 45 mm front escutcheon, 2 module

Item No	Rated Current
QYD28U208B0Z	80A
QYD28U2100B0Z	100A



DIN Range, grey, 45 mm front escutcheon, 3 modules

Item No	Rated Current
QYD38U2125B0Z	125A
QYD38U2150B0Z	150A



DIN Range, grey, 45 mm front escutcheon, 4 modules

Item No	Rated Current
QYD49U2200B0Z	200A



DIN Range, black, 57 mm front escutcheon, 1 module

Item No	Rated Current
QY18U201B0	1A
QY18U202B0	2A
QY18U203B0	3A
QY18U204B0	4A
QY18U206B0	6A
QY18U210B0	10A
QY18U216B0	16A
QY18U220B0	20A
QY18U225B0	25A
QY18U232B0	32A
QY18U240B0	40A
QY18U250B0	50A
QY18U260B0	60A
QY18U263B0	63A



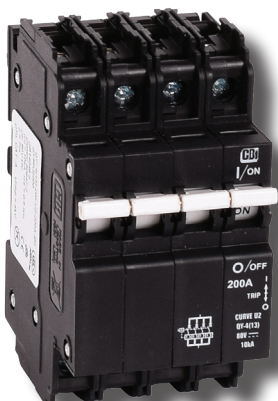
DIN Range, black, 57 mm front escutcheon, 2 modules

Item No	Rated Current
QY28U2080B0Z	80A
QY28U2100B0Z	100A



DIN Range, black, 57 mm front escutcheon, 3 modules

Item No	Rated Current
QY38U2125B0Z	125A
QY38U2150B0Z	150A



DIN Range, black, 57 mm front escutcheon, 4 modules

Item No	Rated Current
QY49U2200	200A



QF 13-Series Standard AC Range

Very compact hydraulic magnetic circuit breaker for space-saving distributions and various forms of device protection. The CBI series QF 13 frame consists of modular AC breakers in a rated current range of 1-25A with a 6kA breaking capacity. The QF frame circuit breakers are IEC, UL and CCC approved. For ratings or configurations not covered in the list, please contact us.

Features

- AC circuit breaker
- Hydraulic-magnetic technology
- 100% rating capability, independent of ambient temperature
- VC 8036 compliant (SANS 556-1)
- VDE, EAC and CCC approved, CE certified
- AS/NZS 3111 approved
- Ratings 1 A to 25 A
- Precision tripping characteristics
- Ultra compact – 13 mm wide module
- Trip indication with mid-trip position
- Can be switched on immediately after tripping
- DIN mount, 45 mm front escutcheon (Grey)
- Suitable to use for electrical isolation
- Shell designed for easier installation onto busbar

Applications

- AC branch circuit protection (DIN / EN 60947-2)
- Switch disconnecter (DIN / EN 60947-3)
- Telecom / datacom equipment
- Lighting control
- UPS equipment
- Alternative energy equipment
- Mobile power generation equipment
- Railway signaling equipment
- Residential equipment
- Industrial equipment

Technical data

DATA	
Product Type	Circuit Breaker
Approvals	DIN / EN 60947-2, VDE, CE, EAC, CCC, UL1077
Number of Poles	1
Operating Voltages	240VAC
Minimum Current Rating	1A
Maximum Current Rating	25A
Interrupting Capacity	6kA
Mounting Options	-40° C - +85° C
Tripping Curves Medium time delay	2

Auxiliary Switch, Trip Alarm & Combo: Features - contact Emcomp

- Handle lock - QFAP001
- Surface mounting clips - SAAX000
- Busbar - SABBM54
- 57 mm escutcheon blank (Dual mount only) - 235608
- 57 mm safety blank (Dual mount only) - SAEB000 Optional Accessories
- Factory fitted
- Attached to right hand side of the circuit breaker
- Compact 6.5 mm width
- Auxiliary switch + trip alarm (Dual mount only)
- Trip alarm (Dual mount only)
- UL 489 listed & IEC 60947-5-1
- Industrial equipment

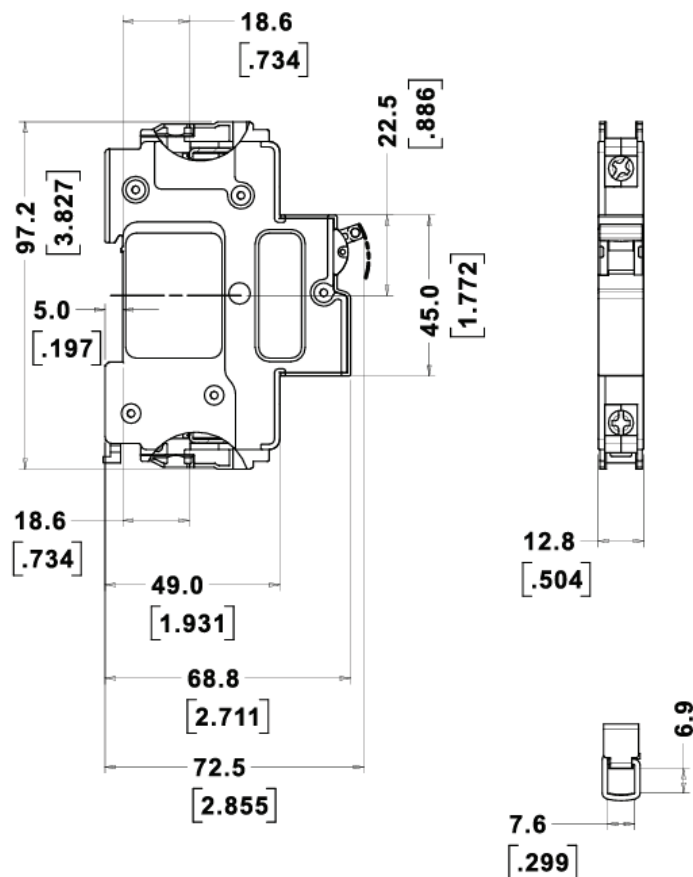
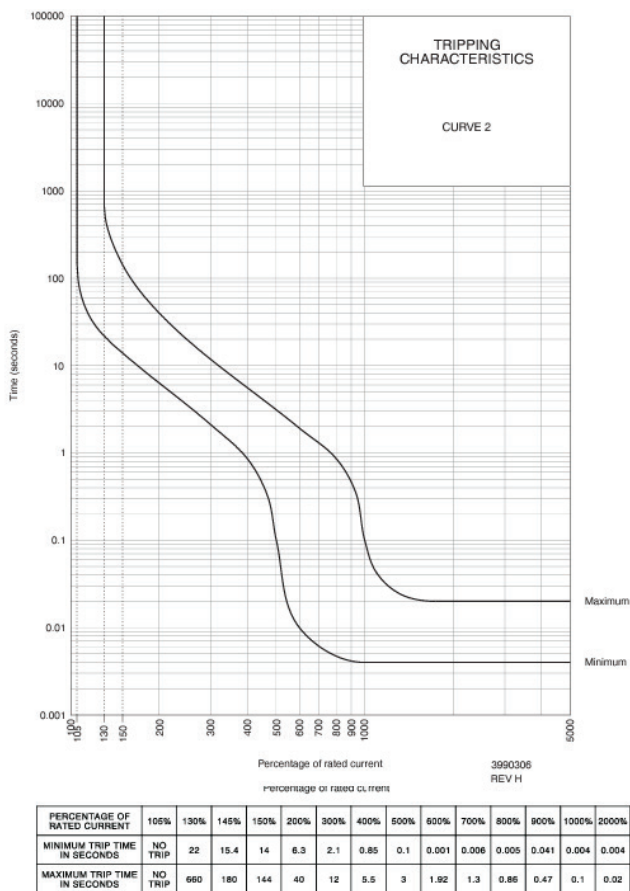
Optional Accessories - contact Emcomp

- Handle lock - QFAP001
- Surface mounting clips - SAAX000
- Busbar - SABBM54
- 57 mm escutcheon blank (Dual mount only) - 235608
- 57 mm safety blank (Dual mount only) - SAEB000

PRODUCT	
Item No	Rated Current
QFB18201	1A
QFB18202	2A
QFB18203	3A
QFB18204	4A
QFB18206	6A
QFB18210	10A
QFB18216	16A
QFB18220	20A
QFB18225	25A

Medium Time Delay Curve-2

Outline Dimensions: DIN Mount



Handle lock

Do you need to ensure that the breaker is not tripped unintentionally? Emcomp has a solution! A handle lock for the Q series. The Q series, has a special lock that make it possible to lock the handle in the on or off position. The lock can be further secured with a pad lock if necessary.

This can be valuable if you have a load that not should be switched off, or vice versa, if you have a load that absolutely not should be switched on, for instance during maintenance work etc.

The circuit breaker can of course still trip if you have an overload or a short circuit even if the handle is locked in the on position.



For other configurations,
consult us at Emcomp

info@emcomp.se

www.emcomp-international.com

www.emcomp-international.com

